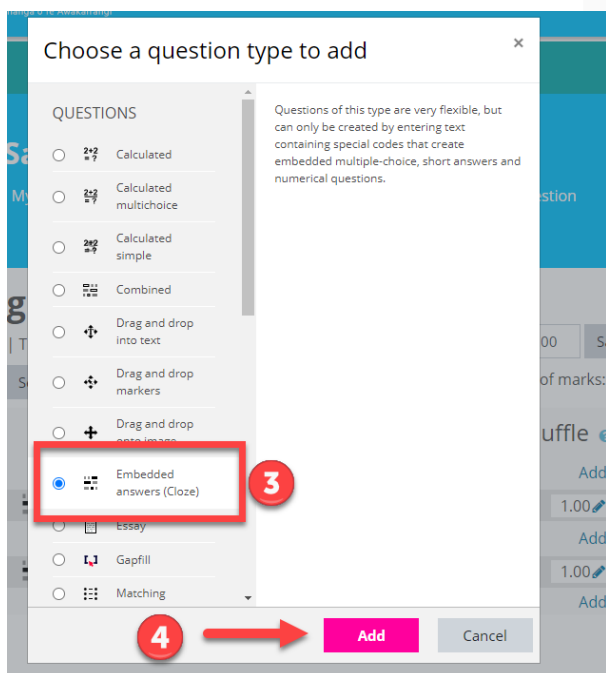


How do I create an Embedded Answers (*Cloze*) question in Moodle quiz?

In Moodle **Embedded Answers (*Cloze*)** questions can consist of a passage of text or a question that has various answers including multiple choice, short answers and numerical.

We have installed a button, **Cloze Editor**, on the toolbar in Moodle quiz that enables you to create these types of questions without having to write any HTML code.

1. Set up the quiz as usual
2. Add a new question
3. Choose **Embedded answers (cloze)**
4. Click: Add



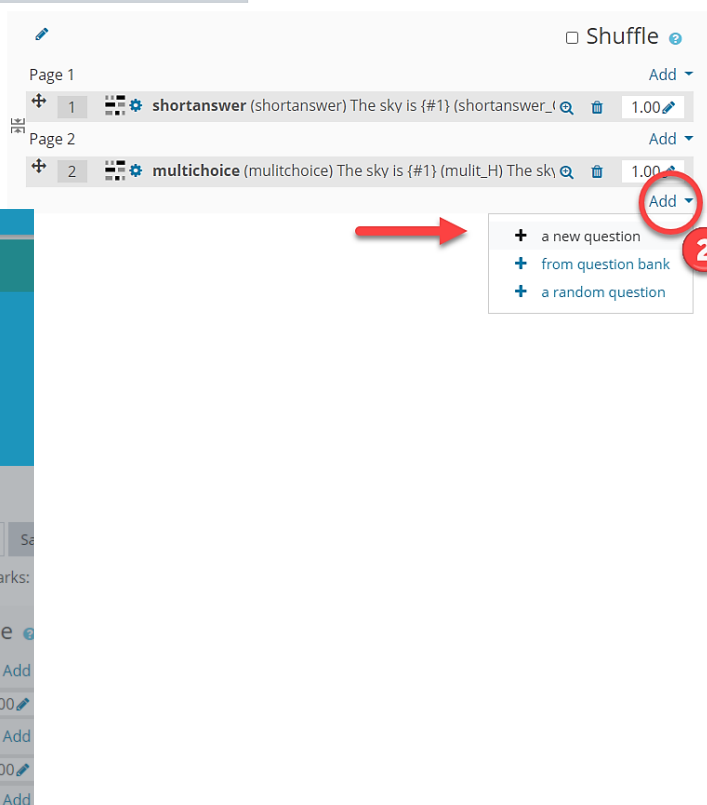
Editing quiz: Quiz cloze question

Questions: 2 | This quiz is open

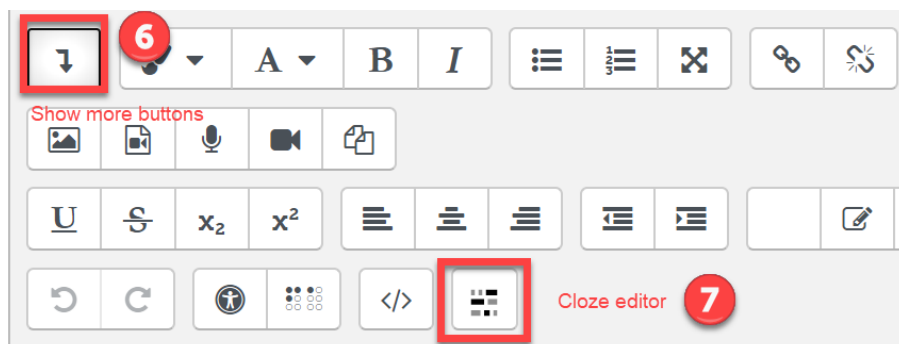
Maximum grade 10.00 Save

Repaginate Select multiple items

Total of marks: 2.00



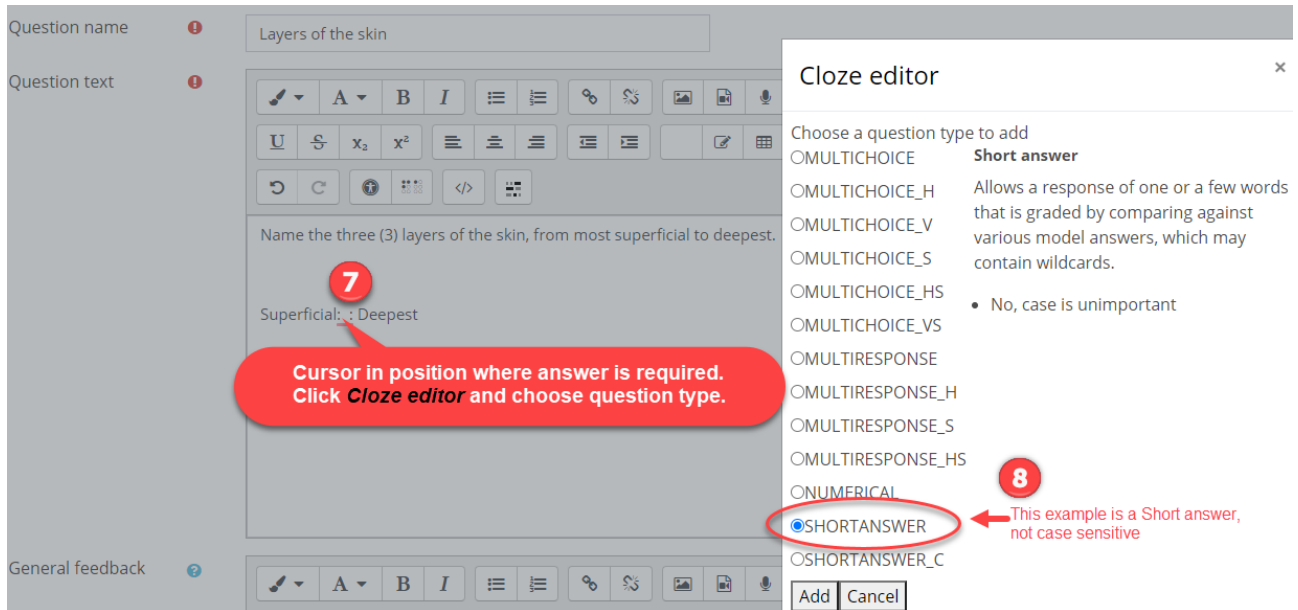
5. Enter a question name
6. You may need to click the show more button to open the toolbar fully



The following example is a Shortanswer question type, with three required answers.

Question: Name the three (3) layers of the skin from the most superficial to the deepest.

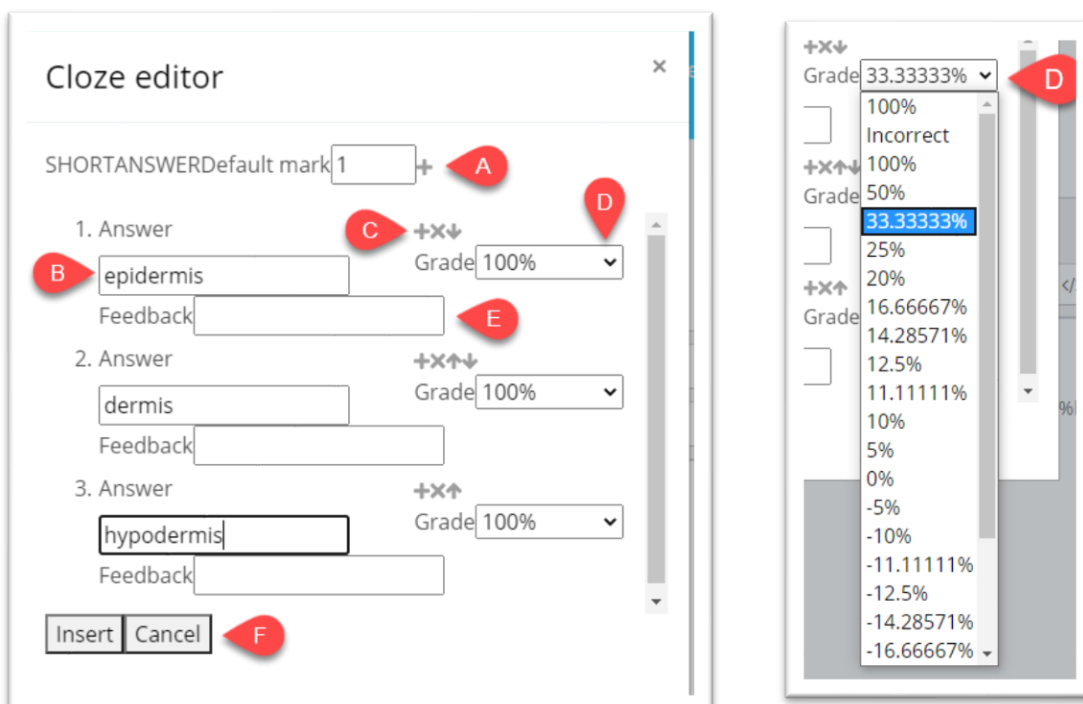
Answers: epidermis, dermis, hypodermis



7. Type in the text and at the place in the text you require the answer click the **cloze editor** button
8. Choose a [question type](#), (table at the end of [this](#) document gives a summary), click: **Add**
9. Enter the required answer details

Shortanswer example above with multiple answer options

- A. Change mark for answer. (This can be changed in [edit quiz questions section](#))
- B. Answer. Type the answer
- C. + to add **additional** answers, arrow to change order of answers
- D. Change % of total mark for each answer if required
- E. Optional feedback
- F. Insert



Question text !

Name the **three (3)** layers of the skin, from most superficial to deepest.

Superficial: {10:SHORTANSWER:~%100%epidermis~%100%dermis~%100%hypodermis} : Deepest

Three separate answers at 100%, default is 1 so total will be 3.
If whole answer is worth 1, change grade % to 33.33333%

10. Check the answer by clicking **Decode and verify the question text** for each question. Red text informs you of any errors.
You must fix errors to be able to save the question.

11. Click **Save changes**

Decode and verify the question text

▼ Question {#1} Short answer

Question definition

{1:SHORTANSWER:~%100%epidermis}

Default mark

1

Case sensitivity

No, case is unimportant

Answer

epidermis

Grade

1

Feedback

▶ Question {#2} Short answer

▶ Question {#3} Short answer

You are returned to the Edit Quiz Questions section.

Skin layers

Name the THREE (3) layers of the skin, from m

3.00

Move

Edit

Preview

Delete

Add question

Edit mark

Question types

Multichoice questions	
Allows the selection of single or multiple responses from a pre-defined list. One answer only.	
MULTICHOICE	Drop-down menu in-line in the text.
MULTICHOICE_H	Horizontal row of buttons.
MULTICHOICE_V	Vertical column of buttons.
MULTICHOICE_S	Drop-down menu in-line in the text. Shuffle within question.
MULTICHOICE_HS	Horizontal row of buttons. Shuffle within question.
MULTICHOICE_VS	Vertical column of buttons. Shuffle within question.

Multiresponse questions	
Allows the selection of single or multiple responses from a pre-defined list. Multiple answers allowed.	
MULTIRESPONCE	Vertical column of checkboxes.
MULTIRESPONCE_H	Horizontal row of checkboxes.
MULTIRESPONCE_S	Vertical column of checkboxes. Shuffle within question.
MULTIRESPONCE_HS	Horizontal row of checkboxes. Shuffle within question.

NUMERICAL	Allows a numerical response, possibly with units, that is graded by comparing against various model answers, possibly with tolerances.
-----------	--

Short answer questions	
SHORTANSWER	Case is unimportant.
SHORTANSWER_C	Case must match.

Cloze editor

Choose a question type to add

☐MULTICHOICE

☐MULTICHOICE_H

☐MULTICHOICE_V

☐MULTICHOICE_S

☐MULTICHOICE_HS

☐MULTICHOICE_VS

☐MULTIRESPONSE

☐MULTIRESPONSE_H

☐MULTIRESPONSE_S

☐MULTIRESPONSE_HS

☐NUMERICAL

☐SHORTANSWER

☐SHORTANSWER_C

Add

Duplicate

Cancel

For more information click the link for [Moodle docs](#)