

# How do I add drag and drop video to a Moodle course?

## Drag and Drop video

If you have a video file saved it is possible to drag and drop it into your course.

You can either:

- add it as a file to download, open and save
- embed it to play within the course

1. Open your course

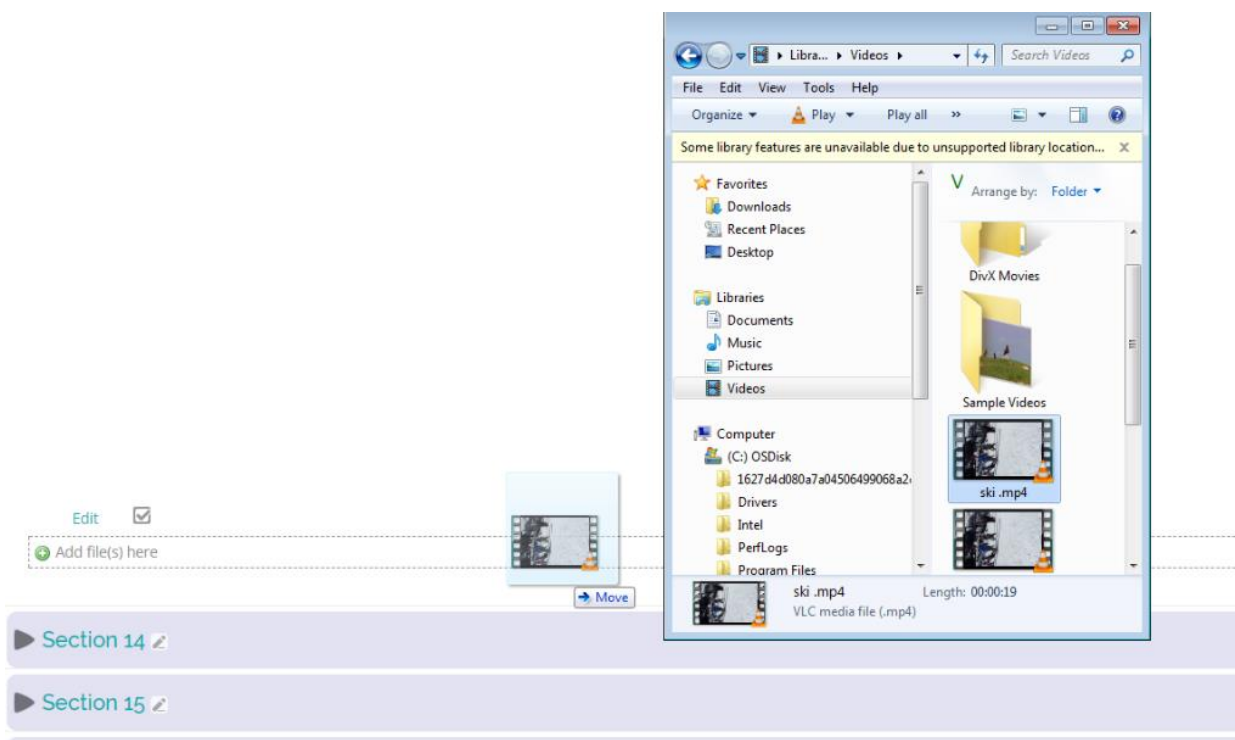
2. Turn editing on



3. Go the section you would like to add the video

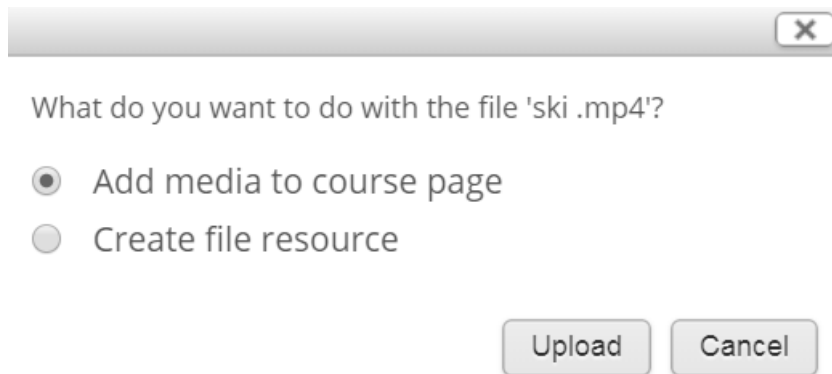
4. Find your mp4 video file

5. Drag it to the correct section of the course



6. Select:

- Add media to course page, to Embed video
- Create file resource, for a downloadable file



The image shows a web interface with a dialog box. At the top, there is a horizontal bar with a close button (X) on the right. Below this bar, the text "What do you want to do with the file 'ski .mp4'?" is displayed. Underneath the text, there are two radio button options: "Add media to course page" (which is selected) and "Create file resource". At the bottom right of the dialog, there are two buttons: "Upload" and "Cancel".

What do you want to do with the file 'ski .mp4'?

☒ Add media to course page

☐ Create file resource

Upload Cancel

7. Click: Save and return to course